



Parramatta, NSW



Available now is a neat office space approx 100 sqm with partitions and carpet tiles, it is ready to create your ultimate office space in the Heart of Parramatta CBD.

Suitable for a professional service in most industries.

Call or email Roy Halabi to discuss this opportunity further.

Contact Agent

Council Rates: \$0/qtr (approx)

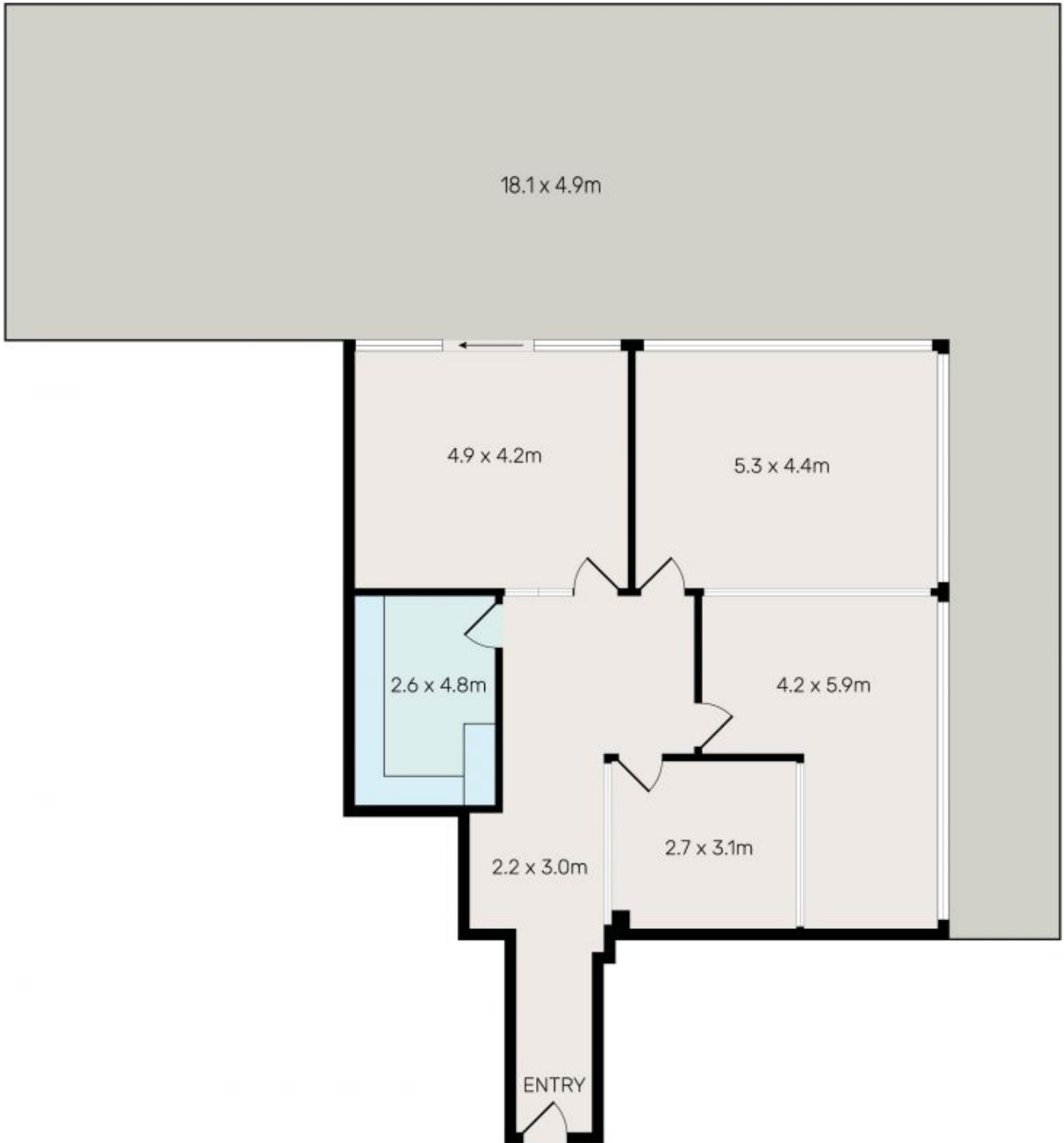
Water Rates: \$0/qtr (approx)

Strata Fees: \$0/qtr (approx)

Contact: Roy Halabi
0414 622 422

Type: Offices

<https://www.gps.properties>



Plans shown are only indicative of layout. Dimensions are approximate.

All i
reli
rely

Parramatta, NSW

Suite 2, 1 Horwood Place, Parramatta